

Percentage of Population Health Areas that are classified as “Hot” and “Cold” across Australian States and Territories.

Contents

Premature – Persons.....	3
Premature – Males.....	3
Premature – Females.....	3
Avoidable – Persons.....	4
Avoidable – Males.....	4
Avoidable - Females.....	4
Premature Cancer.....	5
Avoidable Cancer.....	5
Female Breast Cancer.....	5
Premature Lung Cancer.....	6
Premature Colorectal Cancer.....	6
Avoidable Colorectal Cancer.....	6
Cerebrovascular.....	7
Premature Circulatory.....	7
Avoidable Circulatory.....	7
Chronic Obstructive Pulmonary Disease (COPD).....	8
Diabetes.....	8
Premature External Causes.....	8
Avoidable External Causes.....	9
Ischaemic.....	9
Avoidable Other External Causes.....	9
Premature Respiratory.....	10
Avoidable Respiratory.....	10
Suicide.....	10
Premature Road Traffic Injuries.....	11
Avoidable Transport Accidents.....	11

Premature – Persons

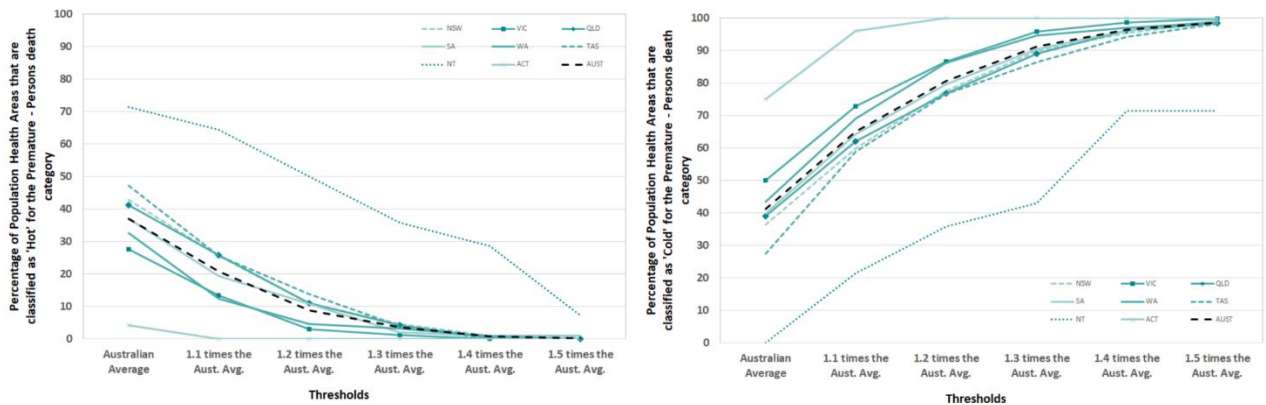


Figure 1 Percentage of Population Health Areas that are classified as “Hot” and “Cold” for the Premature – Persons death category. (NSW = New South Wales, VIC = Victoria, QLD = Queensland, SA = South Australia, WA = Western Australia, TAS = Tasmania, NT = Northern Territory, ACT = Australian Capital Territory, AUST = Australia).

Premature – Males

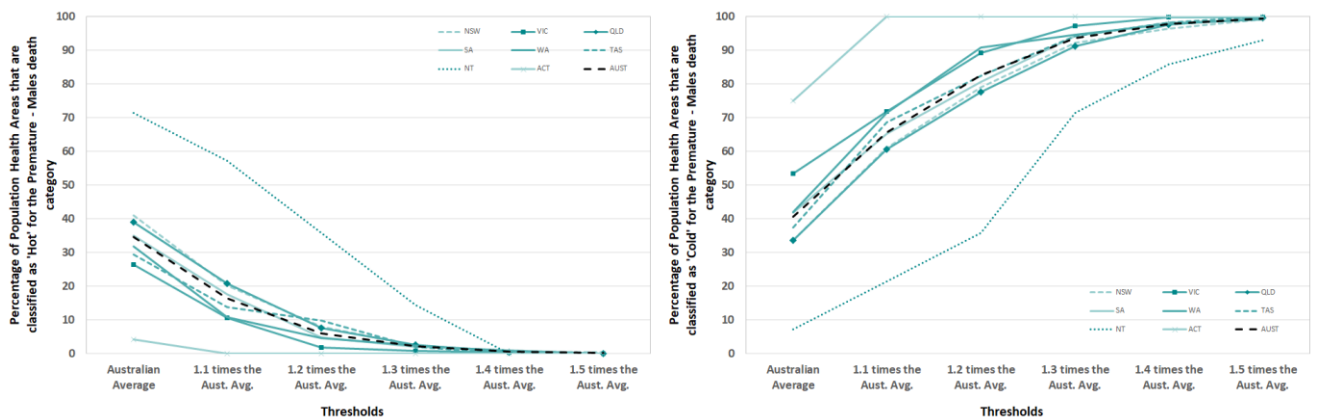


Figure 2 Percentage of Population Health Areas that are classified as “Hot” and “Cold” for the Premature - Males death category. (NSW = New South Wales, VIC = Victoria, QLD = Queensland, SA = South Australia, WA = Western Australia, TAS = Tasmania, NT = Northern Territory, ACT = Australian Capital Territory, AUST = Australia).

Premature – Females

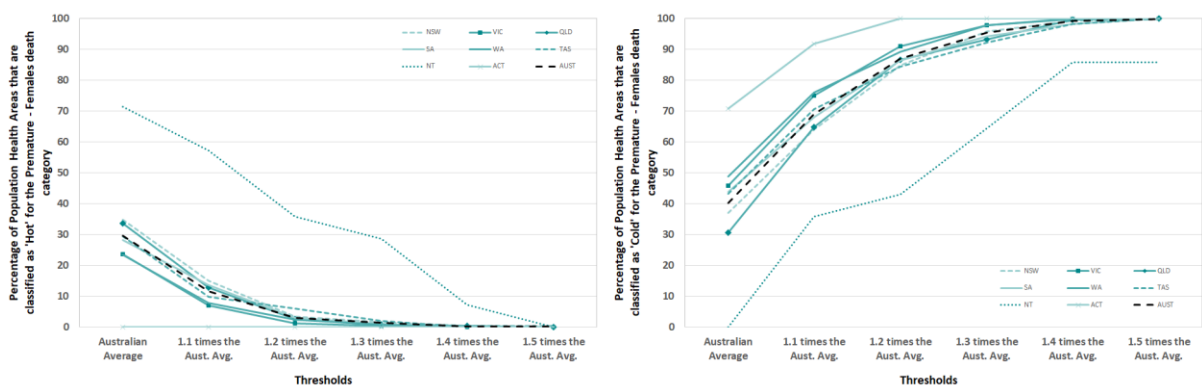


Figure 3 Percentage of Population Health Areas that are classified as “Hot” and “Cold” for the Premature - Females death category. (NSW = New South Wales, VIC = Victoria, QLD = Queensland, SA = South Australia, WA = Western Australia, TAS = Tasmania, NT = Northern Territory, ACT = Australian Capital Territory, AUST = Australia).

Avoidable – Persons

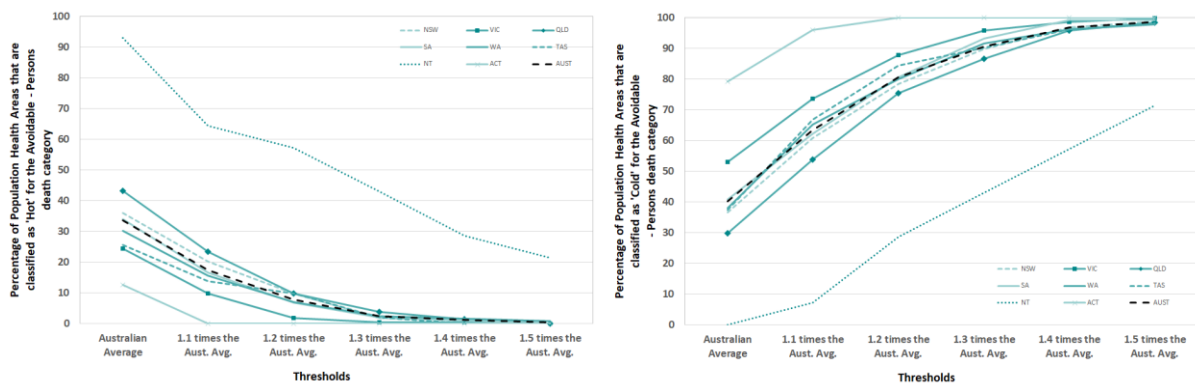


Figure 4 Percentage of Population Health Areas that are classified as “Hot” and “Cold” for the Avoidable – Persons death category. (NSW = New South Wales, VIC = Victoria, QLD = Queensland, SA = South Australia, WA = Western Australia, TAS = Tasmania, NT = Northern Territory, ACT = Australian Capital Territory, AUST = Australia).

Avoidable – Males

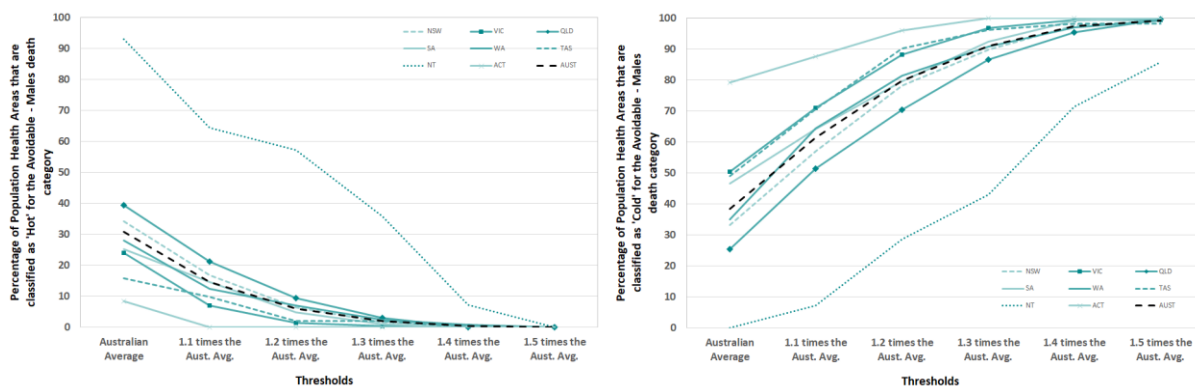


Figure 5 Percentage of Population Health Areas that are classified as “Hot” and “Cold” for the Avoidable - Males death category. (NSW = New South Wales, VIC = Victoria, QLD = Queensland, SA = South Australia, WA = Western Australia, TAS = Tasmania, NT = Northern Territory, ACT = Australian Capital Territory, AUST = Australia).

Avoidable - Females

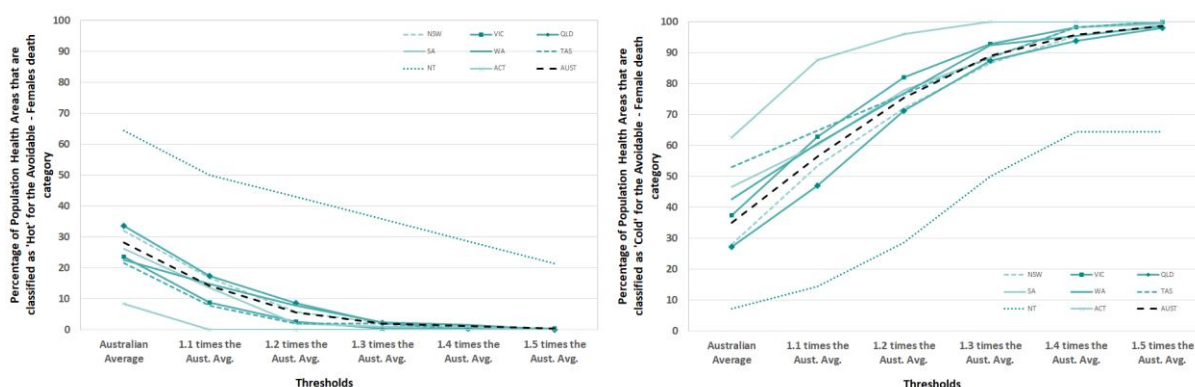


Figure 6 Percentage of Population Health Areas that are classified as “Hot” and “Cold” for the Avoidable - Females death category. (NSW = New South Wales, VIC = Victoria, QLD = Queensland, SA = South Australia, WA = Western Australia, TAS = Tasmania, NT = Northern Territory, ACT = Australian Capital Territory, AUST = Australia).

Premature Cancer

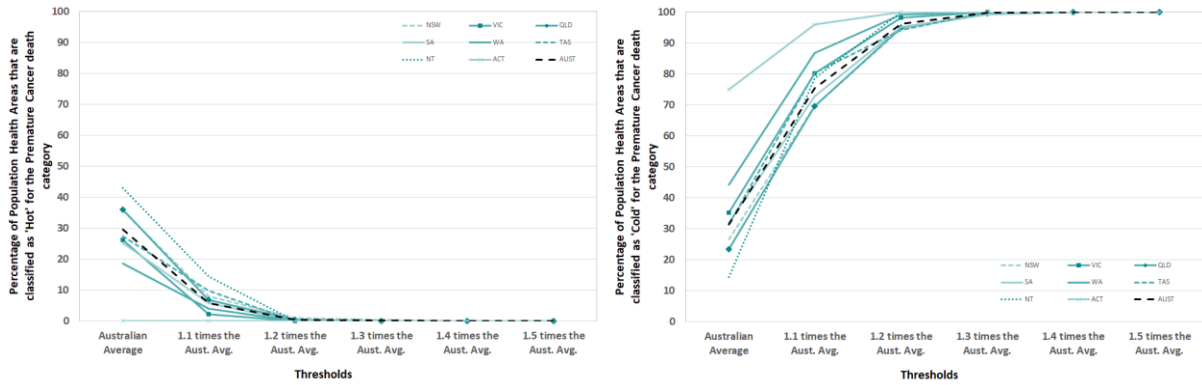


Figure 7 Percentage of Population Health Areas that are classified as “Hot” and “Cold” for the Premature Cancer death category. (NSW = New South Wales, VIC = Victoria, QLD = Queensland, SA = South Australia, WA = Western Australia, TAS = Tasmania, NT = Northern Territory, ACT = Australian Capital Territory, AUST = Australia).

Avoidable Cancer

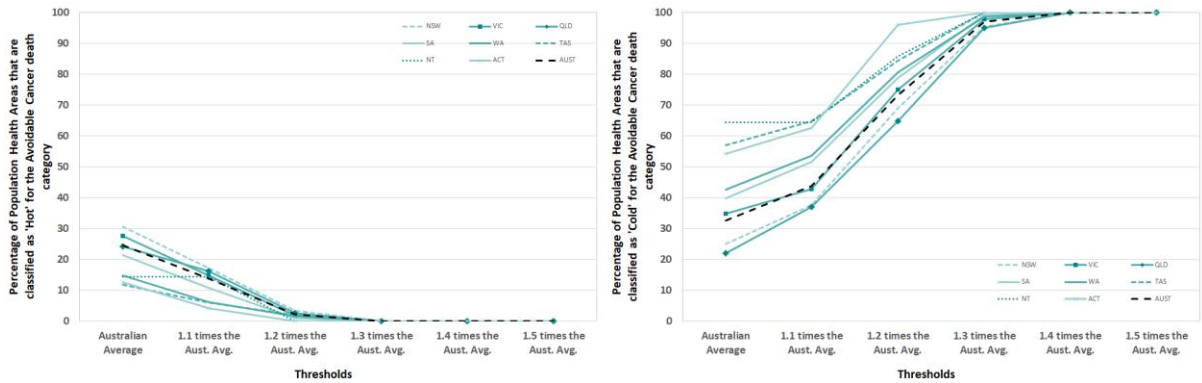


Figure 8 Percentage of Population Health Areas that are classified as “Hot” and “Cold” for the Avoidable Cancer death category. (NSW = New South Wales, VIC = Victoria, QLD = Queensland, SA = South Australia, WA = Western Australia, TAS = Tasmania, NT = Northern Territory, ACT = Australian Capital Territory, AUST = Australia).

Female Breast Cancer

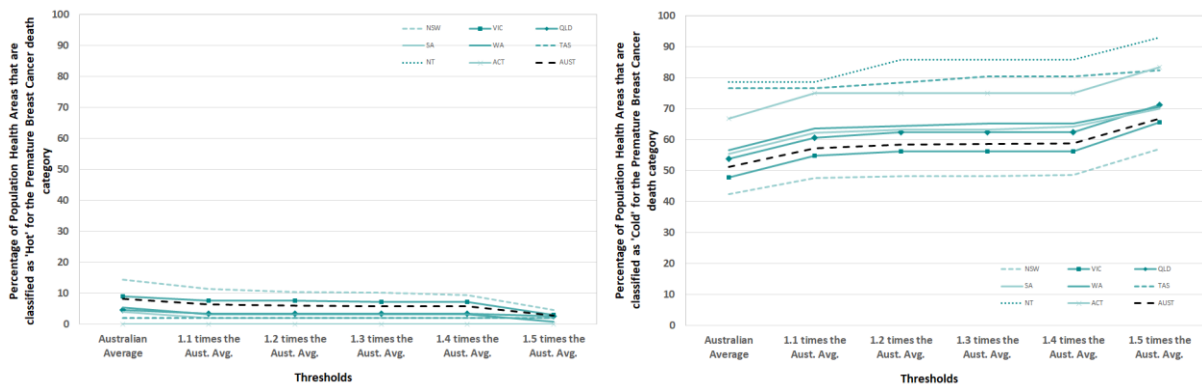


Figure 9 Percentage of Population Health Areas that are classified as “Hot” and “Cold” for the Female Breast Cancer death category. (NSW = New South Wales, VIC = Victoria, QLD = Queensland, SA = South Australia, WA = Western Australia, TAS = Tasmania, NT = Northern Territory, ACT = Australian Capital Territory, AUST = Australia).

Premature Lung Cancer

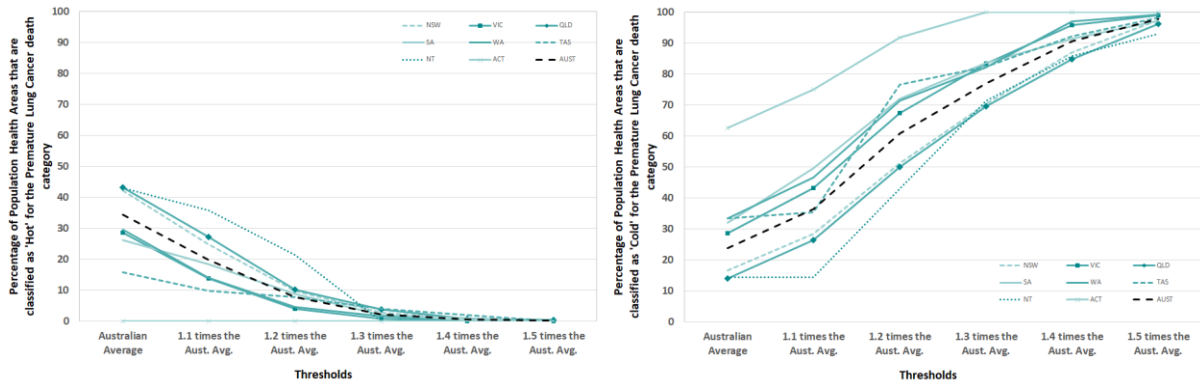


Figure 10 Percentage of Population Health Areas that are classified as “Hot” and “Cold” for the Premature Lung Cancer death category. (NSW = New South Wales, VIC = Victoria, QLD = Queensland, SA = South Australia, WA = Western Australia, TAS = Tasmania, NT = Northern Territory, ACT = Australian Capital Territory, AUST = Australia).

Premature Colorectal Cancer

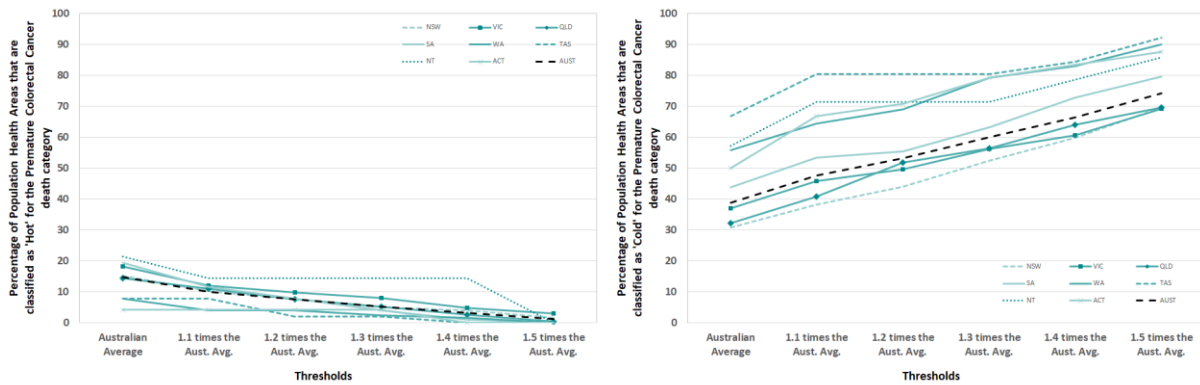


Figure 11 Percentage of Population Health Areas that are classified as “Hot” and “Cold” for the Premature Colorectal Cancer death category. (NSW = New South Wales, VIC = Victoria, QLD = Queensland, SA = South Australia, WA = Western Australia, TAS = Tasmania, NT = Northern Territory, ACT = Australian Capital Territory, AUST = Australia).

Avoidable Colorectal Cancer

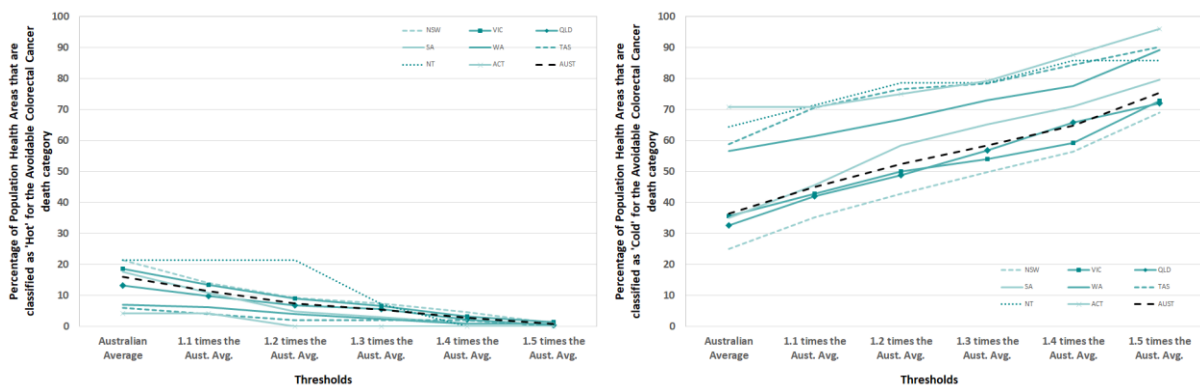


Figure 12 Percentage of Population Health Areas that are classified as “Hot” and “Cold” for the Avoidable Colorectal Cancer death category. (NSW = New South Wales, VIC = Victoria, QLD = Queensland, SA = South Australia, WA = Western Australia, TAS = Tasmania, NT = Northern Territory, ACT = Australian Capital Territory, AUST = Australia).

Cerebrovascular

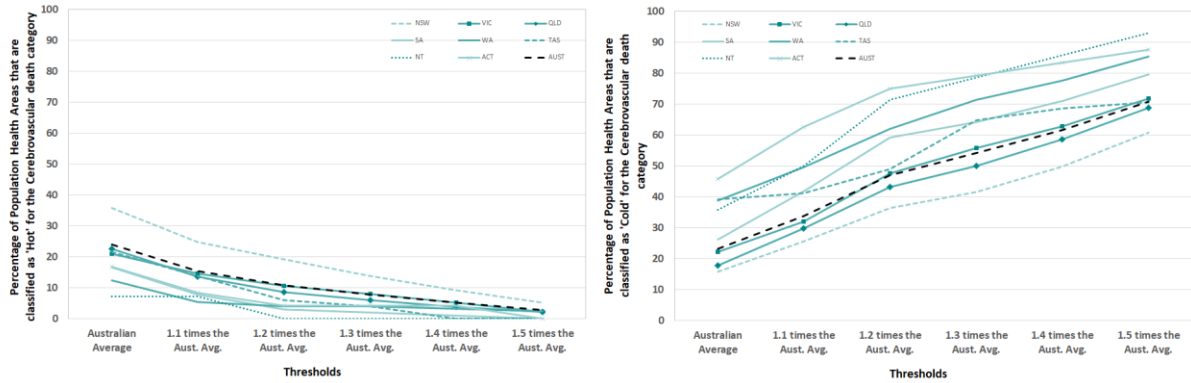


Figure 13 Percentage of Population Health Areas that are classified as “Hot” and “Cold” for the Cerebrovascular death category. (NSW = New South Wales, VIC = Victoria, QLD = Queensland, SA = South Australia, WA = Western Australia, TAS = Tasmania, NT = Northern Territory, ACT = Australian Capital Territory, AUST = Australia).

Premature Circulatory

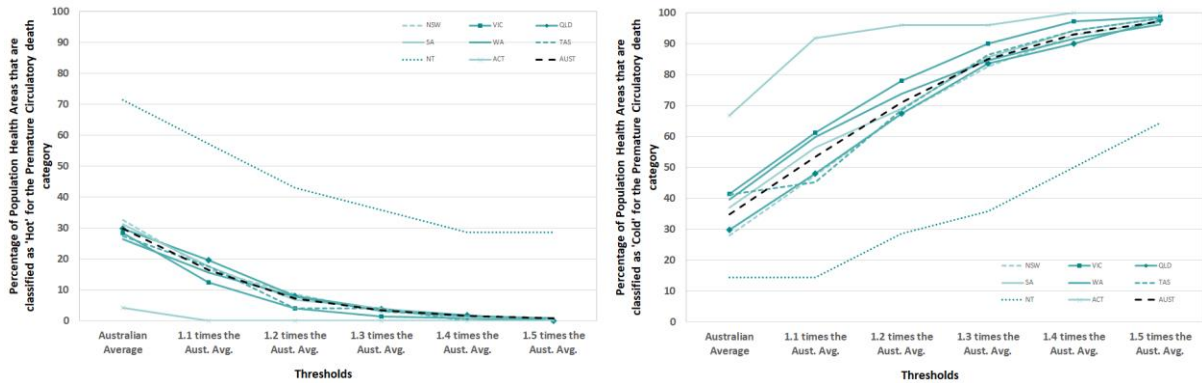


Figure 14 Percentage of Population Health Areas that are classified as “Hot” and “Cold” for the Premature Circulatory death category. (NSW = New South Wales, VIC = Victoria, QLD = Queensland, SA = South Australia, WA = Western Australia, TAS = Tasmania, NT = Northern Territory, ACT = Australian Capital Territory, AUST = Australia).

Avoidable Circulatory

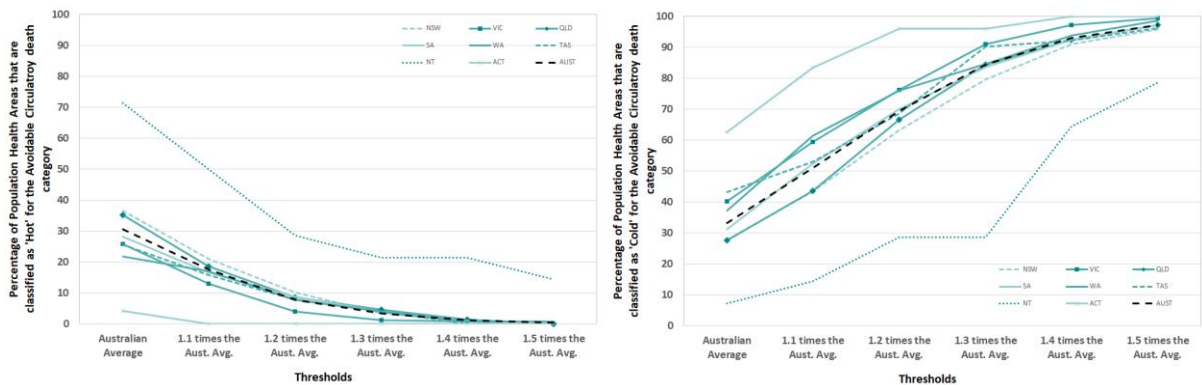


Figure 15 Percentage of Population Health Areas that are classified as “Hot” and “Cold” for the Avoidable Circulatory death category. (NSW = New South Wales, VIC = Victoria, QLD = Queensland, SA = South Australia, WA = Western Australia, TAS = Tasmania, NT = Northern Territory, ACT = Australian Capital Territory, AUST = Australia).

Chronic Obstructive Pulmonary Disease (COPD)

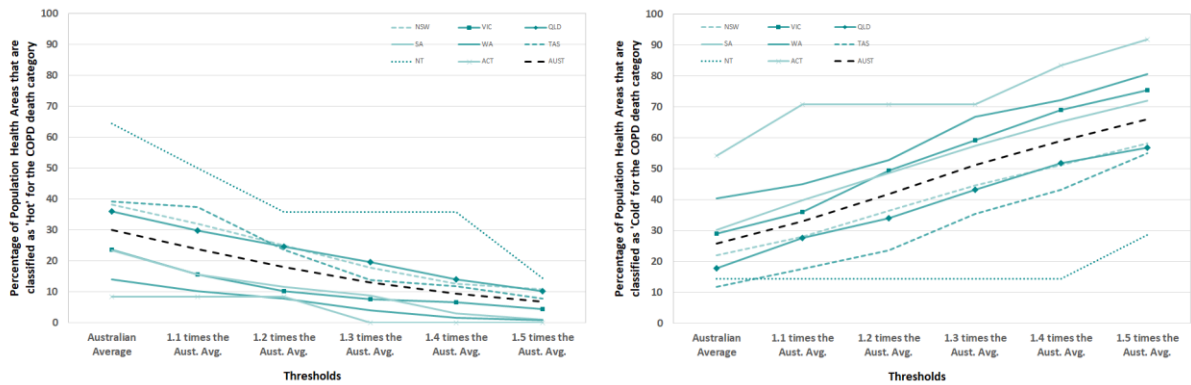


Figure 16 Percentage of Population Health Areas that are classified as “Hot” and “Cold” for the COPD death category. (NSW = New South Wales, VIC = Victoria, QLD = Queensland, SA = South Australia, WA = Western Australia, TAS = Tasmania, NT = Northern Territory, ACT = Australian Capital Territory, AUST = Australia).

Diabetes

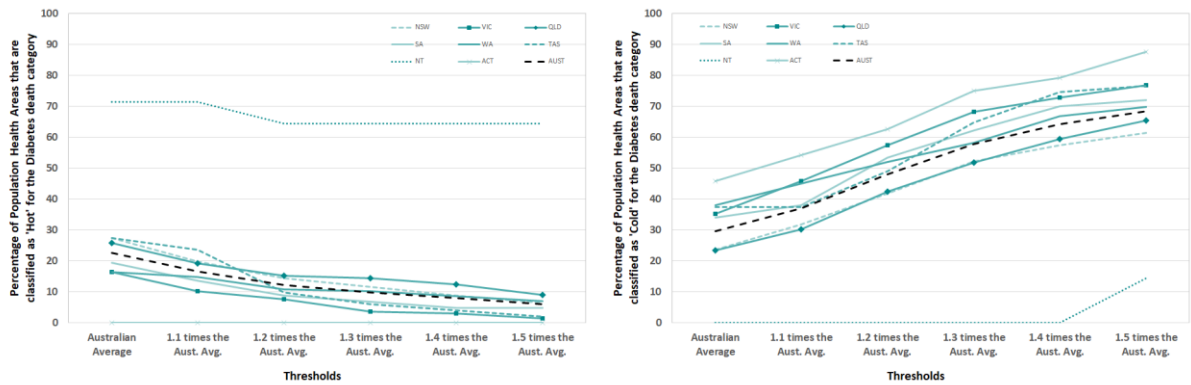


Figure 17 Percentage of Population Health Areas that are classified as “Hot” and “Cold” for the Diabetes death category. (NSW = New South Wales, VIC = Victoria, QLD = Queensland, SA = South Australia, WA = Western Australia, TAS = Tasmania, NT = Northern Territory, ACT = Australian Capital Territory, AUST = Australia).

Premature External Causes

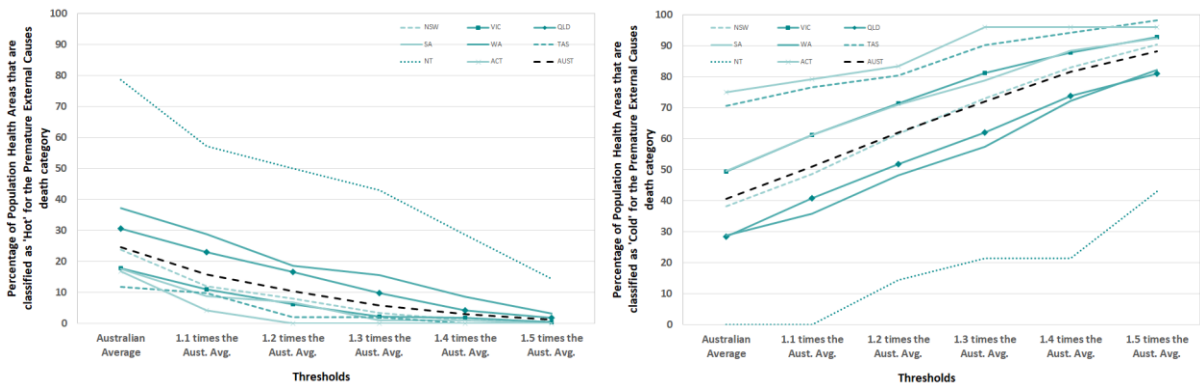


Figure 18 Percentage of Population Health Areas that are classified as “Hot” and “Cold” for the Premature External Causes death category. (NSW = New South Wales, VIC = Victoria, QLD = Queensland, SA = South Australia, WA = Western Australia, TAS = Tasmania, NT = Northern Territory, ACT = Australian Capital Territory, AUST = Australia).

Avoidable External Causes

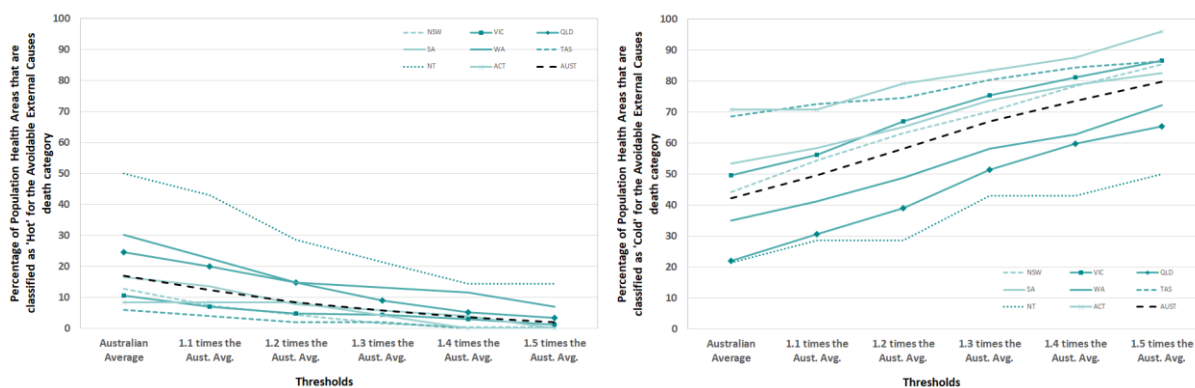


Figure 19 Percentage of Population Health Areas that are classified as “Hot” and “Cold” for the Avoidable External Causes death category. (NSW = New South Wales, VIC = Victoria, QLD = Queensland, SA = South Australia, WA = Western Australia, TAS = Tasmania, NT = Northern Territory, ACT = Australian Capital Territory, AUST = Australia).

Ischaemic

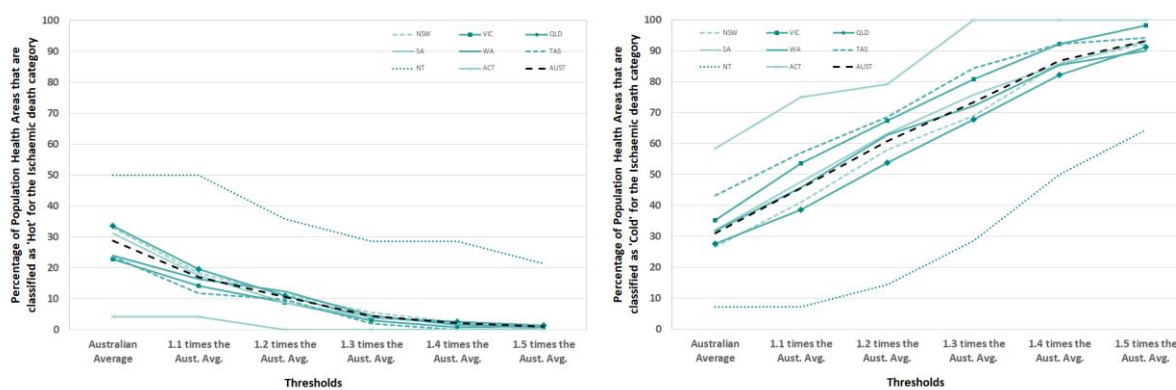


Figure 20 Percentage of Population Health Areas that are classified as “Hot” and “Cold” for the Ischaemic death category. (NSW = New South Wales, VIC = Victoria, QLD = Queensland, SA = South Australia, WA = Western Australia, TAS = Tasmania, NT = Northern Territory, ACT = Australian Capital Territory, AUST = Australia).

Avoidable Other External Causes

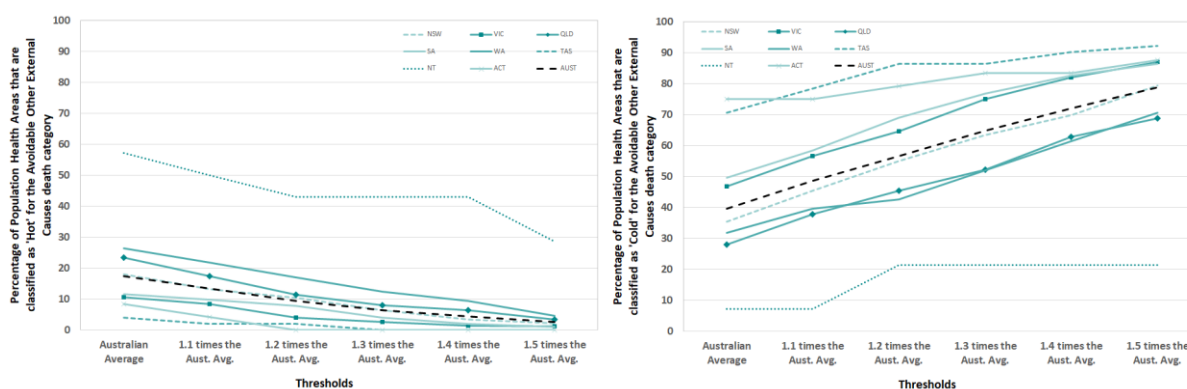


Figure 21 Percentage of Population Health Areas that are classified as “Hot” and “Cold” for the Avoidable Other External Causes death category. (NSW = New South Wales, VIC = Victoria, QLD = Queensland, SA = South Australia, WA = Western Australia, TAS = Tasmania, NT = Northern Territory, ACT = Australian Capital Territory, AUST = Australia).

Premature Respiratory

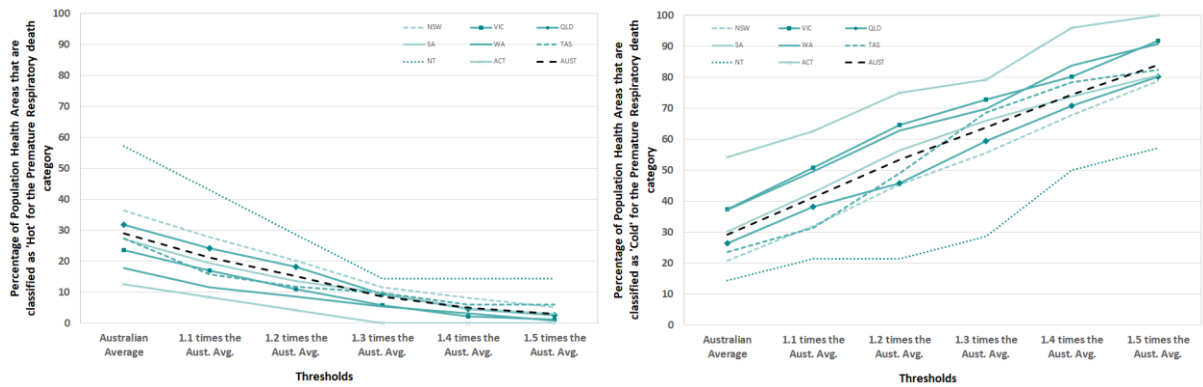


Figure 22 Percentage of Population Health Areas that are classified as “Hot” and “Cold” for the Premature Respiratory death category. (NSW = New South Wales, VIC = Victoria, QLD = Queensland, SA = South Australia, WA = Western Australia, TAS = Tasmania, NT = Northern Territory, ACT = Australian Capital Territory, AUST = Australia).

Avoidable Respiratory

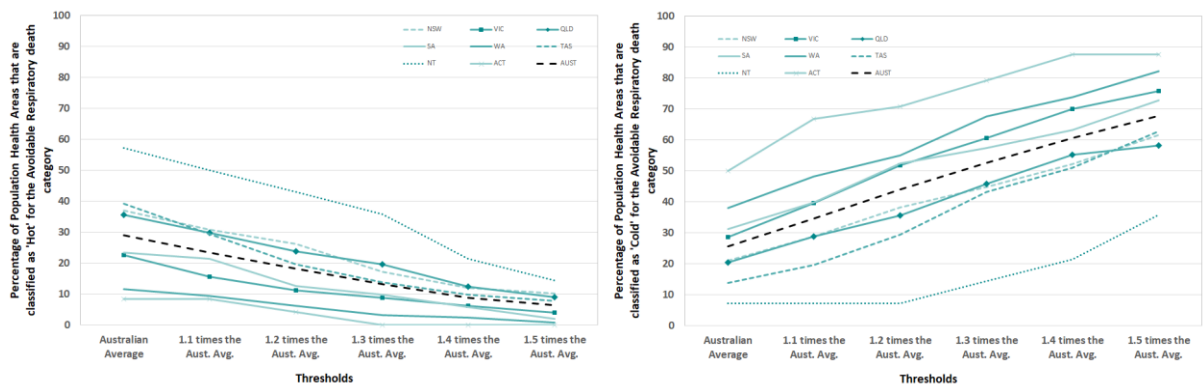


Figure 23 Percentage of Population Health Areas that are classified as “Hot” and “Cold” for the Avoidable Respiratory death category. (NSW = New South Wales, VIC = Victoria, QLD = Queensland, SA = South Australia, WA = Western Australia, TAS = Tasmania, NT = Northern Territory, ACT = Australian Capital Territory, AUST = Australia).

Suicide

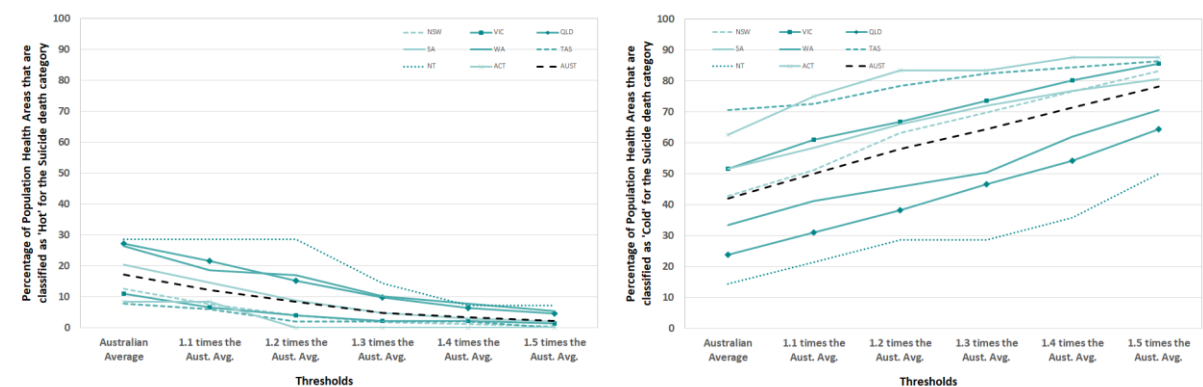


Figure 24 Percentage of Population Health Areas that are classified as “Hot” and “Cold” for the Suicide death category. (NSW = New South Wales, VIC = Victoria, QLD = Queensland, SA = South Australia, WA = Western Australia, TAS = Tasmania, NT = Northern Territory, ACT = Australian Capital Territory, AUST = Australia).

Premature Road Traffic Injuries

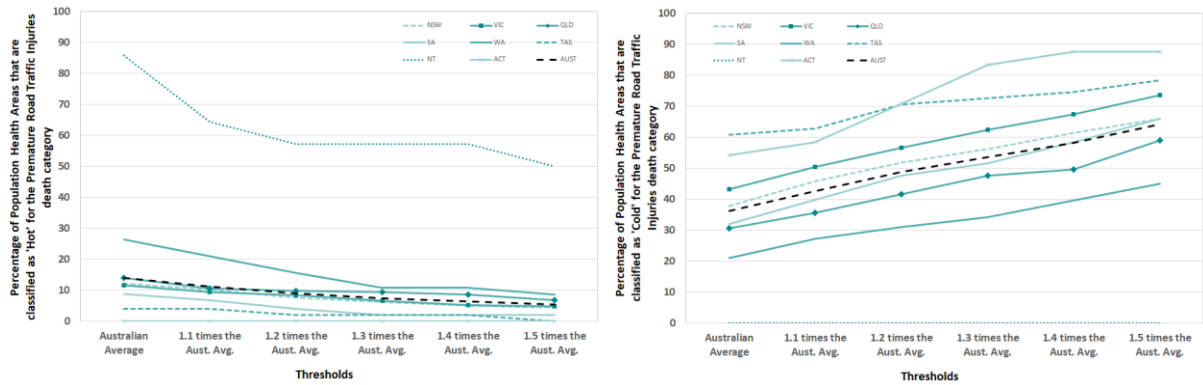


Figure 25 Percentage of Population Health Areas that are classified as “Hot” and “Cold” for the Premature Road Traffic Injuries death category. (NSW = New South Wales, VIC = Victoria, QLD = Queensland, SA = South Australia, WA = Western Australia, TAS = Tasmania, NT = Northern Territory, ACT = Australian Capital Territory, AUST = Australia).

Avoidable Transport Accidents

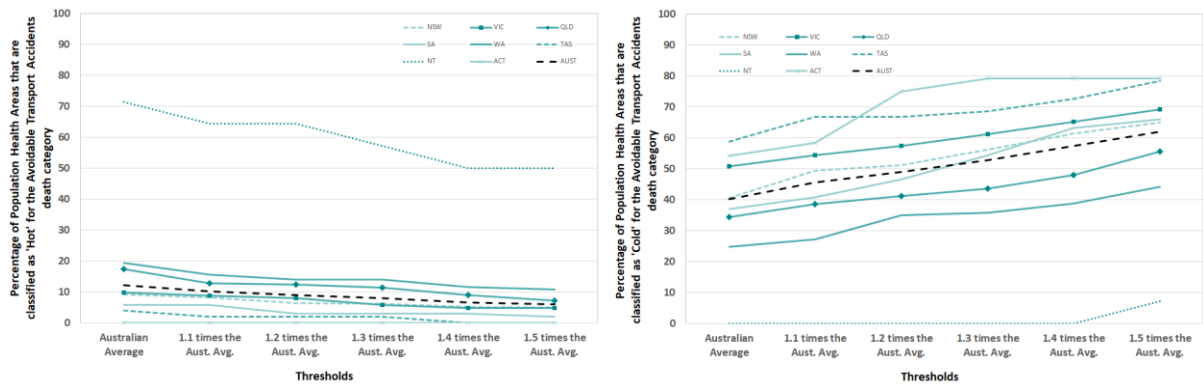


Figure 26 Percentage of Population Health Areas that are classified as “Hot” and “Cold” for the Avoidable Transport Accidents death category. (NSW = New South Wales, VIC = Victoria, QLD = Queensland, SA = South Australia, WA = Western Australia, TAS = Tasmania, NT = Northern Territory, ACT = Australian Capital Territory, AUST = Australia).